



ALS Canada Ltd.
2103 Dollarton Hwy
North Vancouver BC V7H 0A7
Phone: 604 984 0221 Fax: 604 984 0218 www.alsglobal.com

To: KAMINAK GOLD CORPORATION
1020 - 800 WEST PENDER STREET
VANCOUVER BC V6C 2V6

Page: 1
Finalized Date: 14-JUL-2012
This copy reported on
5-NOV-2012
Account: KAMGOL

CERTIFICATE WH12147477

Project: Coffee

P.O. No.: KGC-12-1454

This report is for 110 Drill Core samples submitted to our lab in Whitehorse, YT, Canada on 25-JUN-2012.

The following have access to data associated with this certificate:

TOM BOKENFOHR

JAMES SCOTT

TIM SMITH

SAMPLE PREPARATION

ALS CODE	DESCRIPTION
LOG-21	Sample logging - ClientBarCode
WEI-21	Received Sample Weight
SPLIT-Z	Pulp split for send out
LOG-23	Pulp Login - Rcvd with Barcode
CRU-31	Fine crushing - 70% <2mm
CRU-QC	Crushing QC Test
PUL-QC	Pulverizing QC Test
SPL-21	Split sample - riffle splitter
PUL-31	Pulverize split to 85% <75 um

ANALYTICAL PROCEDURES

ALS CODE	DESCRIPTION	INSTRUMENT
Au-ICP21	Au 30g FA ICP-AES Finish	ICP-AES
ME-ICP41	35 Element Aqua Regia ICP-AES	ICP-AES

To: KAMINAK GOLD CORPORATION
ATTN: ALS MINERALS

This is the Final Report and supersedes any preliminary report with this certificate number. Results apply to samples as submitted. All pages of this report have been checked and approved for release.

Signature:


Colin Ramshaw, Vancouver Laboratory Manager



ALS Canada Ltd.
2103 Dollarton Hwy
North Vancouver BC V7H 0A7
Phone: 604 984 0221 Fax: 604 984 0218 www.alsglobal.com

To: KAMINAK GOLD CORPORATION
1020 - 800 WEST PENDER STREET
VANCOUVER BC V6C 2V6

Page: 2 - A
Total # Pages: 4 (A - C)
Finalized Date: 14-JUL-2012
Account: KAMGOL

Project: Coffee

CERTIFICATE OF ANALYSIS WH12147477

Sample Description	Method Analyte Units LOR	WEI-21 Recvd Wt. kg	Au-ICP21 Au ppm	ME-ICP41 Ag ppm	ME-ICP41 Al %	ME-ICP41 As ppm	ME-ICP41 B ppm	ME-ICP41 Ba ppm	ME-ICP41 Be ppm	ME-ICP41 Bi ppm	ME-ICP41 Ca %	ME-ICP41 Cd ppm	ME-ICP41 Co ppm	ME-ICP41 Cr ppm	ME-ICP41 Cu ppm	ME-ICP41 Fe %
		0.02	0.001	0.2	0.01	2	10	10	0.5	2	0.01	0.5	1	1	1	0.01
KAM077991		4.13	0.006	<0.2	1.85	5	<10	100	<0.5	<2	3.03	<0.5	17	151	4	2.46
KAM077992		3.86	0.001	<0.2	1.72	3	<10	140	<0.5	<2	3.94	<0.5	14	172	17	2.28
KAM077993		4.11	0.004	<0.2	1.93	4	<10	240	<0.5	<2	3.01	<0.5	13	140	6	2.32
KAM077994		3.99	0.002	<0.2	1.71	4	<10	250	<0.5	<2	2.13	<0.5	12	97	9	1.89
KAM077995		4.32	0.007	<0.2	2.58	8	<10	600	0.7	<2	3.38	<0.5	15	160	7	2.73
KAM077996		3.63	0.002	<0.2	2.02	5	<10	280	0.6	<2	1.70	<0.5	19	103	30	2.79
KAM077997		3.91	0.001	<0.2	1.95	4	<10	320	<0.5	<2	1.86	<0.5	23	121	51	2.71
KAM077998		4.00	0.002	<0.2	2.41	5	<10	520	0.5	<2	2.07	<0.5	16	90	20	2.81
KAM077999		3.65	0.002	<0.2	1.78	4	<10	300	<0.5	<2	1.35	<0.5	8	59	15	2.16
KAM078000		0.04	0.003	0.2	1.59	5	<10	90	<0.5	<2	0.86	<0.5	10	29	24	2.49
KAM078001		4.14	0.004	<0.2	2.72	3	<10	440	0.6	<2	2.42	<0.5	17	142	8	3.03
KAM078002		3.73	0.002	<0.2	2.55	7	<10	320	0.6	<2	2.31	<0.5	15	109	5	2.89
KAM078003		3.74	0.001	<0.2	1.08	5	<10	110	0.8	<2	0.92	<0.5	5	70	3	1.23
KAM078004		3.46	0.001	<0.2	0.85	4	<10	70	0.5	<2	0.96	<0.5	4	12	6	0.99
KAM078005		3.85	0.002	<0.2	1.85	5	<10	280	0.5	<2	1.02	<0.5	13	25	11	3.12
KAM078006		3.59	0.001	<0.2	1.46	3	<10	210	0.5	<2	0.86	<0.5	9	25	9	2.03
KAM078007		3.50	0.001	<0.2	0.87	5	<10	60	<0.5	<2	0.45	<0.5	5	8	6	1.23
KAM078008		3.85	0.002	<0.2	1.18	5	<10	90	0.5	<2	0.83	<0.5	8	22	11	1.91
KAM078009		3.80	0.002	<0.2	0.89	5	<10	70	<0.5	<2	0.71	<0.5	4	9	12	1.39
KAM078010		0.04	2.65	0.5	1.16	7	<10	110	<0.5	<2	0.77	<0.5	9	40	39	2.61
KAM078011		3.72	0.004	<0.2	1.68	6	<10	90	0.6	<2	1.38	<0.5	10	59	18	2.37
KAM078012		3.75	0.002	<0.2	1.16	4	<10	90	0.5	<2	1.24	<0.5	8	31	27	1.70
KAM078013		3.57	0.001	<0.2	0.96	4	<10	90	0.5	<2	0.62	<0.5	4	6	11	1.32
KAM078014		3.09	0.001	<0.2	0.98	7	<10	140	0.6	<2	0.75	<0.5	5	8	7	1.60
KAM078015		3.57	0.001	<0.2	0.97	6	<10	290	0.5	<2	0.93	<0.5	6	9	9	1.76
KAM078016		4.26	0.001	<0.2	1.26	6	<10	100	<0.5	<2	0.90	<0.5	11	11	14	2.37
KAM078017		3.80	0.001	<0.2	2.02	4	<10	470	0.5	<2	1.46	<0.5	18	78	25	2.82
KAM078018		3.63	0.001	<0.2	1.79	4	<10	220	<0.5	<2	2.52	<0.5	14	103	14	2.40
KAM078019		4.46	0.001	<0.2	1.90	3	<10	250	<0.5	<2	1.66	<0.5	16	142	8	2.51
KAM078020		0.04	0.006	0.2	1.63	5	<10	90	<0.5	<2	0.87	<0.5	9	30	25	2.46
KAM078021		3.97	0.002	<0.2	1.78	6	<10	140	<0.5	<2	1.74	<0.5	14	129	17	2.45
KAM078022		3.58	0.003	<0.2	2.14	12	<10	250	0.8	<2	1.46	<0.5	15	82	9	2.85
KAM078023		2.86	0.001	<0.2	1.04	9	<10	90	0.7	2	0.67	<0.5	6	9	7	1.60
KAM078024		3.80	0.002	<0.2	1.25	6	<10	150	0.6	4	0.84	<0.5	9	25	16	2.03
KAM078025		3.70	0.003	<0.2	1.56	7	<10	230	0.7	2	0.78	<0.5	12	31	27	2.38
KAM078026		4.53	0.002	<0.2	1.10	6	<10	190	0.6	<2	0.70	<0.5	8	11	8	1.70
KAM078027		3.74	0.002	<0.2	0.99	4	<10	600	0.5	2	1.63	<0.5	8	8	6	1.65
KAM078028		4.15	0.002	<0.2	1.02	5	<10	200	0.6	3	0.77	<0.5	6	8	4	1.63
KAM078029		3.64	0.002	<0.2	1.13	3	<10	470	0.7	2	0.79	<0.5	6	7	5	1.73
KAM078030		0.04	0.246	0.4	0.17	481	<10	1240	<0.5	<2	1.06	<0.5	7	17	33	3.17



ALS Canada Ltd.
2103 Dollarton Hwy
North Vancouver BC V7H 0A7
Phone: 604 984 0221 Fax: 604 984 0218 www.alsglobal.com

To: KAMINAK GOLD CORPORATION
1020 - 800 WEST PENDER STREET
VANCOUVER BC V6C 2V6

Page: 2 - B
Total # Pages: 4 (A - C)
Finalized Date: 14-JUL-2012
Account: KAMGOL

Project: Coffee

CERTIFICATE OF ANALYSIS WH12147477

Sample Description	Method Analyte Units LOR	ME-ICP41	ME-ICP41	ME-ICP41	ME-ICP41	ME-ICP41	ME-ICP41	ME-ICP41	ME-ICP41	ME-ICP41	ME-ICP41	ME-ICP41	ME-ICP41	ME-ICP41	ME-ICP41
		Ga	Hg	K	La	Mg	Mn	Mo	Na	Ni	P	Pb	S	Sb	Sc
		ppm 10	ppm 1	% 0.01	ppm 10	% 0.01	ppm 5	ppm 1	% 0.01	ppm 1	ppm 10	ppm 2	% 0.01	ppm 2	ppm 1
KAM077991		10	1	0.59	10	1.94	627	3	0.07	39	600	4	0.28	<2	3
KAM077992		10	1	0.66	10	1.80	625	<1	0.06	32	520	3	0.30	<2	4
KAM077993		10	<1	1.04	10	2.01	708	3	0.06	34	660	7	0.32	<2	4
KAM077994		<10	<1	0.98	10	1.64	436	<1	0.04	33	550	3	0.22	<2	2
KAM077995		10	<1	1.51	10	2.82	628	6	0.04	38	360	11	0.42	<2	5
KAM077996		10	<1	1.01	<10	2.21	487	3	0.07	25	700	6	0.54	<2	4
KAM077997		10	<1	0.98	<10	2.02	392	2	0.07	37	700	18	0.61	<2	3
KAM077998		10	<1	1.54	10	2.27	540	1	0.06	39	700	11	0.40	<2	3
KAM077999		10	<1	1.10	20	1.53	375	2	0.06	29	500	10	0.30	<2	3
KAM078000		10	<1	0.13	<10	0.76	405	2	0.08	22	610	2	0.05	<2	5
KAM078001		10	<1	1.48	10	2.60	573	1	0.05	47	800	9	0.16	<2	5
KAM078002		10	<1	1.58	10	2.50	529	1	0.05	44	670	2	0.19	<2	4
KAM078003		<10	<1	0.75	10	0.90	203	1	0.06	18	190	<2	0.01	<2	2
KAM078004		<10	<1	0.58	10	0.50	196	1	0.05	2	240	2	0.02	<2	2
KAM078005		10	<1	1.30	30	1.36	388	3	0.05	5	1130	2	0.37	<2	2
KAM078006		10	<1	1.01	50	1.11	285	2	0.06	4	530	2	0.14	<2	2
KAM078007		<10	<1	0.53	50	0.58	151	3	0.07	2	370	2	0.14	<2	2
KAM078008		10	<1	0.73	50	0.85	245	2	0.07	5	440	9	0.21	<2	2
KAM078009		<10	<1	0.57	50	0.53	206	2	0.06	2	370	3	0.24	<2	1
KAM078010		<10	1	0.09	<10	0.56	407	5	0.07	29	510	7	0.15	<2	4
KAM078011		10	<1	1.06	50	1.41	401	1	0.06	20	600	3	0.19	<2	4
KAM078012		10	<1	0.72	50	0.75	302	3	0.06	10	470	15	0.11	<2	2
KAM078013		<10	<1	0.60	50	0.54	200	5	0.06	1	320	7	0.08	<2	1
KAM078014		<10	<1	0.64	40	0.55	285	2	0.06	1	330	2	0.04	<2	1
KAM078015		<10	<1	0.51	40	0.60	217	1	0.09	4	540	2	0.21	<2	3
KAM078016		10	<1	0.74	50	0.77	257	1	0.07	4	610	2	0.26	<2	2
KAM078017		10	1	1.43	20	1.78	428	1	0.07	18	710	<2	0.23	<2	3
KAM078018		10	<1	1.03	10	1.65	434	2	0.09	43	910	6	0.25	<2	3
KAM078019		10	1	1.00	10	1.87	392	1	0.10	47	750	2	0.22	<2	3
KAM078020		10	<1	0.13	<10	0.77	406	2	0.09	21	610	<2	0.05	<2	5
KAM078021		10	<1	0.89	10	1.85	421	3	0.10	54	750	5	0.33	<2	5
KAM078022		10	<1	1.22	30	2.01	497	3	0.06	31	540	8	0.36	<2	5
KAM078023		10	<1	0.63	40	0.73	245	3	0.05	3	260	10	0.14	<2	1
KAM078024		<10	<1	0.81	40	0.95	315	3	0.08	5	410	10	0.22	<2	3
KAM078025		<10	<1	1.07	40	1.26	358	4	0.07	7	460	9	0.25	2	4
KAM078026		<10	<1	0.69	50	0.75	248	3	0.07	3	340	11	0.24	<2	2
KAM078027		<10	<1	0.62	50	0.71	347	2	0.09	2	350	9	0.27	<2	2
KAM078028		<10	<1	0.60	50	0.62	238	1	0.07	2	320	5	0.12	<2	2
KAM078029		<10	<1	0.71	40	0.63	249	1	0.08	2	330	5	0.19	<2	2
KAM078030		<10	2	0.07	<10	0.03	42	15	0.05	10	60	14	0.15	25	1



ALS Canada Ltd.
 2103 Dollarton Hwy
 North Vancouver BC V7H 0A7
 Phone: 604 984 0221 Fax: 604 984 0218 www.alsglobal.com

To: KAMINAK GOLD CORPORATION
 1020 - 800 WEST PENDER STREET
 VANCOUVER BC V6C 2V6

Page: 2 - C
 Total # Pages: 4 (A - C)
 Finalized Date: 14-JUL-2012
 Account: KAMGOL

Project: Coffee

CERTIFICATE OF ANALYSIS WH12147477

Sample Description	Method Analyte Units LOR	ME-ICP41	ME-ICP41	ME-ICP41	ME-ICP41	ME-ICP41	ME-ICP41
		Th	Ti	Ti	U	V	Zn
		ppm	%	ppm	ppm	ppm	ppm
		20	0.01	10	10	1	2
KAM077991		<20	0.12	<10	<10	40	<10
KAM077992		<20	0.13	<10	<10	45	<10
KAM077993		<20	0.15	<10	<10	48	<10
KAM077994		<20	0.18	<10	<10	36	<10
KAM077995		<20	0.15	<10	<10	56	10
KAM077996		<20	0.18	<10	<10	57	<10
KAM077997		<20	0.19	<10	<10	48	<10
KAM077998		<20	0.24	<10	<10	53	<10
KAM077999		<20	0.16	<10	<10	31	<10
KAM078000		<20	0.14	<10	<10	61	20
KAM078001		<20	0.21	<10	<10	61	<10
KAM078002		<20	0.24	<10	<10	54	<10
KAM078003		30	0.08	<10	<10	22	<10
KAM078004		30	0.06	<10	<10	16	<10
KAM078005		<20	0.24	<10	<10	37	<10
KAM078006		20	0.15	<10	<10	27	<10
KAM078007		30	0.09	<10	<10	8	<10
KAM078008		30	0.12	<10	<10	20	<10
KAM078009		30	0.10	<10	<10	10	<10
KAM078010		<20	0.11	<10	<10	53	10
KAM078011		20	0.15	<10	<10	37	<10
KAM078012		30	0.09	<10	<10	20	<10
KAM078013		30	0.07	<10	<10	8	<10
KAM078014		30	0.09	<10	<10	18	<10
KAM078015		20	0.14	<10	<10	20	<10
KAM078016		20	0.17	<10	<10	22	<10
KAM078017		<20	0.24	<10	<10	64	<10
KAM078018		<20	0.27	<10	<10	42	<10
KAM078019		<20	0.25	<10	<10	49	<10
KAM078020		<20	0.14	<10	<10	61	20
KAM078021		<20	0.18	<10	<10	46	<10
KAM078022		20	0.15	<10	<10	42	<10
KAM078023		30	0.05	<10	<10	9	<10
KAM078024		30	0.09	<10	<10	23	<10
KAM078025		20	0.12	<10	<10	35	<10
KAM078026		30	0.06	<10	<10	11	<10
KAM078027		30	0.06	<10	<10	13	<10
KAM078028		30	0.06	<10	<10	9	<10
KAM078029		30	0.06	<10	<10	9	<10
KAM078030		<20	0.01	10	<10	10	30



ALS Canada Ltd.
2103 Dollarton Hwy
North Vancouver BC V7H 0A7
Phone: 604 984 0221 Fax: 604 984 0218 www.alsglobal.com

To: KAMINAK GOLD CORPORATION
1020 - 800 WEST PENDER STREET
VANCOUVER BC V6C 2V6

Page: 3 - A
Total # Pages: 4 (A - C)
Finalized Date: 14-JUL-2012
Account: KAMGOL

Project: Coffee

CERTIFICATE OF ANALYSIS WH12147477

Sample Description	Method Analyte Units LOR	WEI-21 Recvd Wt. kg	Au-ICP21 Au ppm	ME-ICP41 Ag ppm	ME-ICP41 Al %	ME-ICP41 As ppm	ME-ICP41 B ppm	ME-ICP41 Ba ppm	ME-ICP41 Be ppm	ME-ICP41 Bi ppm	ME-ICP41 Ca %	ME-ICP41 Cd ppm	ME-ICP41 Co ppm	ME-ICP41 Cr ppm	ME-ICP41 Cu ppm	ME-ICP41 Fe %
		0.02	0.001	0.2	0.01	2	10	10	0.5	2	0.01	0.5	1	1	1	0.01
KAM078031		3.75	0.002	<0.2	0.92	4	<10	120	0.6	2	0.57	<0.5	6	8	8	1.67
KAM078032		3.09	0.004	<0.2	1.26	4	<10	380	0.7	2	0.54	<0.5	7	7	8	1.81
KAM078033		4.18	0.003	<0.2	1.35	17	<10	380	0.7	<2	2.76	<0.5	11	50	10	2.39
KAM078034		4.17	0.001	<0.2	1.33	99	<10	100	1.1	2	5.87	<0.5	21	74	27	3.29
KAM078035		4.07	0.001	<0.2	0.95	29	<10	100	0.7	3	4.20	<0.5	13	10	10	2.82
KAM078036		3.95	0.001	<0.2	1.24	13	<10	110	<0.5	<2	3.42	<0.5	11	7	10	2.78
KAM078037		3.70	0.001	<0.2	1.54	6	<10	200	<0.5	3	3.68	<0.5	10	9	13	3.01
KAM078038		3.54	0.002	<0.2	1.49	3	<10	120	<0.5	<2	3.54	<0.5	10	7	15	2.95
KAM078039		4.02	0.002	<0.2	1.52	3	<10	120	<0.5	3	3.78	<0.5	11	7	15	2.98
KAM078040		0.03	0.002	0.2	1.59	5	<10	90	<0.5	<2	0.91	<0.5	11	29	23	2.51
KAM078041		4.21	0.002	<0.2	1.62	3	<10	120	<0.5	2	3.78	<0.5	12	9	17	3.11
KAM078042		3.90	0.001	<0.2	1.83	5	<10	120	<0.5	<2	3.95	<0.5	13	10	23	3.32
KAM078043		3.92	0.001	<0.2	1.91	6	<10	110	<0.5	2	3.93	<0.5	12	10	23	3.36
KAM078044		4.20	0.002	<0.2	1.50	2	<10	140	0.5	2	4.59	<0.5	12	8	18	3.12
KAM078045		3.91	0.003	<0.2	1.55	3	<10	180	<0.5	2	4.01	<0.5	12	9	18	3.26
KAM078046		4.19	0.001	<0.2	1.17	5	<10	200	0.6	2	4.19	<0.5	12	6	14	3.19
KAM078047		3.96	0.001	<0.2	1.38	4	<10	390	0.5	3	4.12	<0.5	13	8	17	3.19
KAM078048		4.20	0.001	<0.2	1.75	<2	<10	250	<0.5	<2	3.94	<0.5	12	10	19	3.25
KAM078049		4.22	0.002	<0.2	1.72	3	<10	260	<0.5	<2	3.96	<0.5	13	11	18	3.15
KAM078050		0.04	0.917	1.0	1.53	16	<10	120	<0.5	<2	1.01	1.0	9	29	337	3.14
KAM078051		3.85	0.004	<0.2	1.81	2	<10	110	<0.5	3	3.84	<0.5	12	11	16	3.20
KAM078052		4.15	0.002	<0.2	1.97	2	<10	120	<0.5	<2	4.06	<0.5	13	14	15	3.45
KAM078053		4.05	0.001	<0.2	1.90	<2	<10	110	<0.5	2	4.01	<0.5	13	14	11	3.48
KAM078054		4.03	0.001	<0.2	2.07	<2	<10	130	<0.5	2	4.14	<0.5	14	18	15	3.61
KAM078055		3.93	0.001	<0.2	3.17	<2	<10	170	<0.5	<2	4.37	<0.5	20	140	24	3.86
KAM078056		3.45	0.006	<0.2	3.83	36	<10	270	<0.5	<2	4.06	<0.5	25	242	23	4.13
KAM078057		3.56	0.001	<0.2	3.39	3	<10	250	<0.5	<2	3.46	<0.5	22	172	29	3.92
KAM078058		3.60	0.001	<0.2	3.29	3	<10	250	<0.5	<2	3.25	<0.5	22	174	29	3.72
KAM078059		4.22	0.002	<0.2	3.99	3	<10	270	<0.5	<2	3.64	<0.5	21	150	34	3.92
KAM078060		0.04	0.002	0.5	1.69	5	<10	100	<0.5	<2	0.94	<0.5	9	31	26	2.58
KAM078061		4.21	0.001	<0.2	4.11	3	<10	260	<0.5	<2	3.67	<0.5	21	64	32	3.47
KAM078062		4.42	0.001	<0.2	3.37	4	<10	240	<0.5	<2	2.74	<0.5	18	16	26	3.59
KAM078063		4.12	0.001	<0.2	3.17	5	<10	260	<0.5	<2	3.29	<0.5	18	10	26	3.87
KAM078064		4.20	0.002	<0.2	3.20	4	<10	290	<0.5	<2	3.12	<0.5	18	12	32	4.23
KAM078065		4.21	0.002	<0.2	4.29	4	<10	280	<0.5	<2	4.18	<0.5	22	106	37	4.43
KAM078066		4.07	0.004	<0.2	3.19	2	<10	290	<0.5	<2	4.05	<0.5	19	351	31	2.58
KAM078067		3.69	0.002	<0.2	1.34	3	<10	160	0.6	<2	1.40	<0.5	11	9	17	2.18
KAM078068		3.64	0.001	<0.2	1.21	<2	<10	150	0.5	<2	1.12	<0.5	19	14	20	2.80
KAM078069		3.99	0.001	<0.2	2.94	2	<10	420	<0.5	<2	1.73	<0.5	22	157	53	3.08
KAM078070		0.03	6.11	1.2	1.63	38	<10	90	<0.5	<2	0.69	<0.5	8	36	85	3.59



ALS Canada Ltd.
2103 Dollarton Hwy
North Vancouver BC V7H 0A7
Phone: 604 984 0221 Fax: 604 984 0218 www.alsglobal.com

To: KAMINAK GOLD CORPORATION
1020 - 800 WEST PENDER STREET
VANCOUVER BC V6C 2V6

Page: 3 - B
Total # Pages: 4 (A - C)
Finalized Date: 14-JUL-2012
Account: KAMGOL

Project: Coffee

CERTIFICATE OF ANALYSIS WH12147477

Sample Description	Method Analyte Units LOR	ME-ICP41	ME-ICP41	ME-ICP41	ME-ICP41	ME-ICP41	ME-ICP41	ME-ICP41	ME-ICP41	ME-ICP41	ME-ICP41	ME-ICP41	ME-ICP41	ME-ICP41	ME-ICP41
		Ga	Hg	K	La	Mg	Mn	Mo	Na	Ni	P	Pb	S	Sb	Sc
		ppm 10	ppm 1	% 0.01	ppm 10	% 0.01	ppm 5	ppm 1	% 0.01	ppm 1	ppm 10	ppm 2	% 0.01	ppm 2	ppm 1
KAM078031		<10	<1	0.54	40	0.52	196	2	0.08	2	300	5	0.32	2	2
KAM078032		10	<1	0.77	40	0.76	229	1	0.09	2	300	3	0.39	<2	2
KAM078033		<10	<1	0.55	30	1.52	472	1	0.06	27	490	5	0.16	2	7
KAM078034		<10	<1	0.28	10	2.47	732	<1	0.03	58	980	9	0.14	7	13
KAM078035		<10	<1	0.29	20	1.40	754	<1	0.03	16	1390	8	0.09	3	3
KAM078036		<10	<1	0.31	30	1.15	734	<1	0.04	9	1580	6	0.09	<2	1
KAM078037		<10	<1	0.29	30	1.32	803	<1	0.05	10	1700	6	0.09	<2	1
KAM078038		<10	<1	0.29	30	1.22	786	<1	0.04	8	1720	6	0.09	<2	1
KAM078039		<10	<1	0.30	30	1.27	780	<1	0.04	9	1760	6	0.10	<2	1
KAM078040		10	<1	0.12	<10	0.77	393	2	0.09	22	590	2	0.05	<2	5
KAM078041		<10	<1	0.28	30	1.36	790	<1	0.04	10	1830	7	0.09	<2	1
KAM078042		<10	<1	0.28	30	1.44	820	2	0.04	13	1900	6	0.12	<2	1
KAM078043		<10	<1	0.27	30	1.49	808	3	0.04	11	1870	5	0.10	<2	1
KAM078044		<10	<1	0.30	30	1.38	844	2	0.04	11	1810	7	0.09	<2	1
KAM078045		<10	<1	0.29	20	1.50	847	2	0.04	12	1830	5	0.09	<2	1
KAM078046		<10	<1	0.30	20	1.50	816	<1	0.04	11	1820	5	0.11	<2	1
KAM078047		<10	<1	0.27	30	1.50	816	<1	0.05	13	1850	6	0.09	<2	2
KAM078048		<10	<1	0.29	30	1.49	804	<1	0.04	11	1810	5	0.11	<2	1
KAM078049		<10	<1	0.29	20	1.52	806	<1	0.04	13	1800	5	0.11	<2	2
KAM078050		10	<1	0.20	10	0.76	472	9	0.11	24	620	265	0.11	2	5
KAM078051		<10	<1	0.29	20	1.49	785	<1	0.04	13	1780	5	0.10	<2	2
KAM078052		<10	<1	0.33	20	1.58	809	<1	0.04	14	1810	6	0.11	<2	2
KAM078053		<10	<1	0.36	20	1.59	808	<1	0.04	13	1870	6	0.10	<2	2
KAM078054		10	<1	0.49	20	1.70	798	<1	0.04	17	1680	5	0.12	2	2
KAM078055		10	<1	0.62	10	3.20	747	<1	0.04	69	1390	5	0.06	<2	8
KAM078056		10	<1	1.04	10	4.11	784	<1	0.06	103	1230	5	0.03	<2	11
KAM078057		10	<1	0.98	<10	3.56	704	<1	0.07	77	1250	5	0.07	<2	8
KAM078058		10	<1	0.99	<10	3.46	647	<1	0.09	79	1140	5	0.09	<2	8
KAM078059		10	<1	1.10	<10	3.47	696	1	0.13	74	1100	3	0.11	<2	8
KAM078060		10	<1	0.13	<10	0.80	420	3	0.09	23	630	3	0.05	<2	5
KAM078061		10	<1	0.99	10	3.10	614	1	0.17	49	960	3	0.11	<2	8
KAM078062		10	<1	0.92	10	2.83	629	1	0.10	26	1270	4	0.13	<2	6
KAM078063		10	<1	0.86	10	2.48	722	1	0.11	12	1470	4	0.13	<2	6
KAM078064		10	<1	0.95	10	2.54	762	1	0.09	12	1700	3	0.13	<2	7
KAM078065		10	<1	1.20	10	3.28	811	4	0.16	39	1290	3	0.12	<2	10
KAM078066		10	<1	0.79	10	3.34	623	4	0.11	104	710	2	0.05	<2	11
KAM078067		10	<1	0.88	30	0.99	353	3	0.08	7	410	3	0.41	<2	3
KAM078068		<10	<1	0.77	60	0.84	377	3	0.09	5	390	5	0.32	<2	2
KAM078069		10	<1	1.62	20	2.34	498	3	0.14	70	1450	3	0.24	<2	4
KAM078070		10	2	0.15	10	0.71	553	619	0.07	31	570	86	0.83	16	4



ALS Canada Ltd.
2103 Dollarton Hwy
North Vancouver BC V7H 0A7
Phone: 604 984 0221 Fax: 604 984 0218 www.alsglobal.com

To: KAMINAK GOLD CORPORATION
1020 - 800 WEST PENDER STREET
VANCOUVER BC V6C 2V6

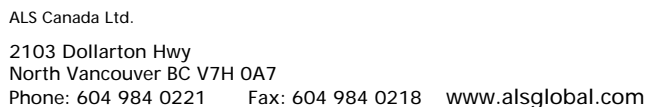
Page: 3 - C
Total # Pages: 4 (A - C)
Finalized Date: 14-JUL-2012
Account: KAMGOL

Project: Coffee

CERTIFICATE OF ANALYSIS WH12147477

Sample Description	Method Analyte Units LOR	ME-ICP41	ME-ICP41	ME-ICP41	ME-ICP41	ME-ICP41	ME-ICP41	ME-ICP41
		Th	Ti	Ti	U	V	W	Zn
		ppm 20	% 0.01	ppm 10	ppm 10	ppm 1	ppm 10	ppm 2
KAM078031		30	0.04	<10	<10	8	<10	16
KAM078032		30	0.04	<10	<10	9	<10	22
KAM078033		20	0.04	<10	<10	38	<10	27
KAM078034		<20	0.02	<10	<10	90	<10	44
KAM078035		<20	0.01	<10	<10	38	<10	51
KAM078036		<20	<0.01	<10	<10	21	<10	55
KAM078037		<20	<0.01	<10	<10	24	<10	60
KAM078038		<20	<0.01	<10	<10	21	<10	60
KAM078039		<20	<0.01	<10	<10	22	<10	60
KAM078040		<20	0.14	<10	<10	61	20	42
KAM078041		<20	<0.01	<10	<10	24	<10	61
KAM078042		<20	0.01	<10	<10	27	<10	64
KAM078043		<20	0.01	<10	<10	28	<10	64
KAM078044		<20	<0.01	<10	<10	26	<10	58
KAM078045		<20	0.01	<10	<10	28	<10	61
KAM078046		<20	<0.01	<10	<10	27	<10	60
KAM078047		<20	<0.01	<10	<10	28	<10	61
KAM078048		<20	0.01	<10	<10	28	<10	60
KAM078049		<20	0.01	<10	<10	27	<10	59
KAM078050		<20	0.14	<10	<10	63	10	199
KAM078051		<20	0.01	<10	<10	29	<10	60
KAM078052		<20	0.01	<10	<10	32	<10	63
KAM078053		<20	0.01	<10	<10	34	<10	61
KAM078054		<20	0.02	<10	<10	41	<10	65
KAM078055		<20	0.10	<10	<10	78	<10	55
KAM078056		<20	0.19	<10	<10	106	<10	56
KAM078057		<20	0.22	<10	<10	117	<10	54
KAM078058		<20	0.23	<10	<10	114	<10	49
KAM078059		<20	0.25	<10	<10	132	<10	56
KAM078060		<20	0.15	<10	<10	64	20	46
KAM078061		<20	0.25	<10	<10	124	<10	48
KAM078062		<20	0.22	<10	<10	105	<10	57
KAM078063		<20	0.23	<10	<10	108	<10	60
KAM078064		<20	0.22	<10	<10	118	<10	64
KAM078065		<20	0.28	<10	<10	161	<10	57
KAM078066		<20	0.12	<10	<10	70	<10	28
KAM078067		30	0.07	<10	<10	16	<10	24
KAM078068		30	0.10	<10	<10	19	<10	23
KAM078069		20	0.24	<10	<10	87	<10	34
KAM078070		<20	0.11	<10	<10	57	10	74

ALS Canada Ltd.
2103 Dollarton Hwy
North Vancouver BC V7H 0A7
Phone: 604 984 0221 Fax: 604 984 0218 www.alsglobal.com



Page: 4 - B
Total # Pages: 4 (A - C)
Finalized Date: 14-JUL-2012
Account: KAMGOL

CERTIFICATE OF ANALYSIS WH12147477

Sample Description	Method Analyte Units LOR	ME-ICP41	ME-ICP41	ME-ICP41	ME-ICP41	ME-ICP41	ME-ICP41	ME-ICP41	ME-ICP41	ME-ICP41	ME-ICP41	ME-ICP41	ME-ICP41	ME-ICP41	ME-ICP41	
		Ga	Hg	K	La	Mg	Mn	Mo	Na	Ni	P	Pb	S	Sb	Sc	Sr
		ppm 10	ppm 1	% 0.01	ppm 10	% 0.01	ppm 5	ppm 1	% 0.01	ppm 1	ppm 10	ppm 2	% 0.01	ppm 2	ppm 1	ppm 1
KAM078071		10	<1	2.10	10	3.11	630	2	0.18	89	1860	<2	0.12	2	5	297
KAM078072		<10	<1	0.63	50	0.51	347	3	0.07	3	420	4	0.36	<2	1	46
KAM078073		<10	<1	0.89	40	0.93	391	4	0.06	6	520	4	0.25	<2	2	30
KAM078074		10	<1	1.40	50	1.42	494	2	0.05	11	610	4	0.13	<2	2	31
KAM078075		<10	<1	1.06	40	1.09	441	2	0.05	8	540	4	0.14	<2	2	33
KAM078076		<10	<1	0.82	50	0.79	361	3	0.05	3	330	5	0.32	<2	1	24
KAM078077		<10	<1	0.89	50	1.08	510	3	0.05	3	420	3	0.23	<2	3	41
KAM078078		<10	<1	0.61	60	0.52	333	2	0.06	3	350	3	0.12	<2	2	58
KAM078079		10	1	0.88	50	1.04	568	14	0.07	5	400	4	0.33	<2	3	42
KAM078080		10	<1	0.13	<10	0.79	418	4	0.09	23	630	2	0.05	<2	5	45
KAM078081		<10	<1	0.76	50	0.67	447	6	0.07	3	380	4	0.48	<2	1	33
KAM078082		10	<1	0.57	60	0.72	396	4	0.06	2	360	5	0.60	<2	2	31
KAM078083		10	<1	1.09	50	1.27	510	2	0.05	8	480	4	0.37	<2	4	43
KAM078084		<10	<1	0.44	60	0.51	345	2	0.06	2	340	5	0.28	<2	2	35
KAM078085		10	<1	1.00	50	1.04	406	2	0.06	5	370	5	0.34	<2	2	36
KAM078086		<10	<1	0.78	50	0.86	366	4	0.06	3	340	5	0.23	<2	2	23
KAM078087		<10	<1	0.62	50	0.66	363	2	0.05	4	360	4	0.22	<2	2	37
KAM078088		10	<1	1.04	50	0.98	492	3	0.05	6	400	5	0.49	<2	3	39
KAM078089		<10	<1	0.57	60	0.49	341	3	0.06	2	330	5	0.32	<2	2	26
KAM078090		<10	12	0.10	20	0.04	11	5	0.06	9	380	4	0.26	35	2	206
KAM078091		<10	<1	0.46	60	0.57	359	2	0.06	3	330	3	0.11	<2	2	23
KAM078092		<10	<1	0.75	60	0.78	385	3	0.05	4	360	3	0.09	<2	2	23
KAM078093		<10	<1	0.80	50	0.74	411	2	0.05	5	410	7	0.14	<2	2	34
KAM078094		<10	<1	0.65	50	0.66	275	4	0.04	4	330	2	0.21	<2	2	17
KAM078095		10	<1	2.82	20	4.38	1425	3	0.06	48	1340	2	0.09	<2	6	80
KAM078096		10	<1	1.84	30	1.88	614	2	0.06	11	910	<2	0.20	<2	3	47
KAM078097		<10	<1	0.50	60	0.55	288	5	0.04	3	370	3	0.19	<2	2	20
KAM078098		10	<1	0.67	50	0.71	346	7	0.04	7	500	3	0.19	<2	2	26
KAM078099		<10	<1	0.67	60	0.52	322	2	0.03	5	400	5	0.17	2	2	27
KAM078100		10	<1	0.12	<10	0.75	401	4	0.08	22	610	3	0.05	<2	5	41



ALS Canada Ltd.
 2103 Dollarton Hwy
 North Vancouver BC V7H 0A7
 Phone: 604 984 0221 Fax: 604 984 0218 www.alsglobal.com

To: KAMINAK GOLD CORPORATION
 1020 - 800 WEST PENDER STREET
 VANCOUVER BC V6C 2V6

Page: 4 - C
 Total # Pages: 4 (A - C)
 Finalized Date: 14-JUL-2012
 Account: KAMGOL

Project: Coffee

CERTIFICATE OF ANALYSIS WH12147477

Sample Description	Method Analyte Units LOR	ME-ICP41	ME-ICP41	ME-ICP41	ME-ICP41	ME-ICP41	ME-ICP41	ME-ICP41
		Th	Ti	Ti	U	V	W	Zn
		ppm	%	ppm	ppm	ppm	ppm	ppm
		20	0.01	10	10	1	10	2
KAM078071		<20	0.27	<10	<10	122	<10	41
KAM078072		30	0.05	<10	<10	9	<10	17
KAM078073		30	0.08	<10	<10	13	<10	26
KAM078074		20	0.14	<10	<10	18	<10	39
KAM078075		20	0.12	<10	<10	16	<10	33
KAM078076		30	0.07	<10	<10	7	<10	29
KAM078077		20	0.09	<10	<10	21	<10	32
KAM078078		30	0.08	<10	<10	10	<10	21
KAM078079		30	0.11	<10	<10	24	<10	38
KAM078080		<20	0.15	<10	<10	64	20	46
KAM078081		30	0.11	<10	<10	9	<10	29
KAM078082		30	0.08	<10	<10	10	<10	28
KAM078083		30	0.12	<10	<10	32	<10	38
KAM078084		30	0.05	<10	<10	8	<10	23
KAM078085		30	0.11	<10	<10	16	<10	35
KAM078086		30	0.09	<10	<10	10	<10	34
KAM078087		30	0.06	<10	<10	11	<10	25
KAM078088		30	0.12	<10	<10	24	<10	38
KAM078089		30	0.06	<10	<10	11	<10	23
KAM078090		<20	0.01	<10	<10	96	10	15
KAM078091		30	0.04	<10	<10	8	<10	23
KAM078092		30	0.08	<10	<10	12	<10	29
KAM078093		30	0.08	<10	<10	10	<10	33
KAM078094		30	0.07	<10	<10	8	<10	25
KAM078095		<20	0.41	<10	<10	97	<10	93
KAM078096		20	0.27	<10	<10	61	<10	52
KAM078097		30	0.05	<10	<10	9	<10	28
KAM078098		20	0.07	<10	<10	11	<10	32
KAM078099		30	0.07	<10	<10	10	<10	29
KAM078100		<20	0.14	<10	<10	60	20	44